

# ***Electric Actuators for Hazardous Locations (FM Version)***

AUMA manufactures a complete range of actuators suitable for installation in hazardous locations. Explosionproof actuators are designed in such a way that a flame or spark cannot reach the outside of the actuator enclosure. AUMA explosionproof actuators are available for applications requiring multiturn, quarterturn (part-turn) and linear actuation.

## **Hazardous location requirements**

AUMA offers actuators in accordance with several international standards including ATEX, CSA and FM. The FM version meets the following criteria:

- Class I, Division 1, Groups C & D
- Class II / III, Division 1, Groups E, F & G

## **Multiturn actuators**

- Suitable for requirements up to 103,000 lb thrust / 2960 ft lb torque direct mount and 309,000 lb thrust / 11,800 ft lb torque in multiturn actuator / bevel gear combinations.



**SAExC Multiturn Actuator**

## **Quarterturn actuators**

- Single-phase quarterturn actuators up to 880 ft lb torque



**SGExC Quarterturn Actuator**

- Three phase actuators of both the SGExC and SAExC / GS types are capable of 265,000 ft lb torque.

## Linear actuators

- Appropriate for applications requiring up to 48,825 lb thrust at strokes up to 19.6 in.



SAExC LE Linear Actuator

## Broad range of features

- A wide range of operating speeds and closing times is available.
- Versions are available for both open/close and modulating service.
- Enhanced submersion and corrosion protection options are available to deal with unusual or adverse environmental conditions.
- **Double-seal** terminal compartment available as an option
- Actuators with and without integral controls are provided by means of AUMA's control options - the **AUMA Matic** and **AUMATIC**.



SAExC with AMExC AUMA Matic Controls



SAExC with AUMATIC Controls

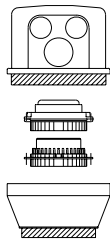
**Features (continued)**

- Ability to interface with a wide range of plant control systems using conventional I/O such as discrete inputs or analog signals in addition to fieldbus communications including PROFIBUS, DeviceNet, Modbus and Foundation Fieldbus.
- Conventional actuators (with limit and torque switches) featuring easy to set end-of-position switches.
- **Non-intrusive actuators** with reliable absolute encoders and microprocessor-based **AUMATIC** controls.
- Capability to **remote-mount controls on a wall bracket** enabling actuator controls to be located at a convenient or more environmentally compatible location.

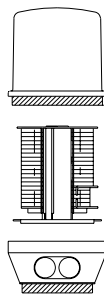


**SAExC with remote mounted ACEc**

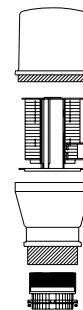
- Selection of field terminal configurations including AUMA's preferred plug & socket electrical connection



**Terminal type SE  
Plug & Socket**



**Terminal type KE  
Compression  
Terminals**



**Terminal Type KES  
Compression  
Terminals with Plug &  
Socket at Actuator and  
Double Seal**

## **Summary of AUMA products for hazardous locations – (FM version)**

- **SAExC** multiturn actuator
- **SAExC / GK** multiturn actuator
- **SGExC** quarterturn actuator
- **SAExC / GS** quarterturn actuator
- **SAExC LE** linear actuator

**The actuators listed above are available with the following significant options:**

- **AMEx AUMA Matic** actuator controls
- **AMExC AUMA Matic** actuator controls
- **Matic Triple Play** actuator controls
- **ACExC AUMATIC** actuator controls
- **Remote mounted AMExC or ACExC**
- **Double seal**

*Solutions for a world in motion*